



## ANTIBACTERIAL SUNLYTE CEILING WHITE (Sp)

Wallmaax Sunlyte – Ceiling White is a unique product designed with state of the art emulsion with siloxane modification and selective bacticides to provide excellent resistance to fungal and algal growth caused in interior due to wetness in the wall/substrate.



**LEAD FREE\* GUARANTEE**

\* All Wallmaax Paints products contain no added Lead, Mercury, Arsenic or Chromium from April 2016.

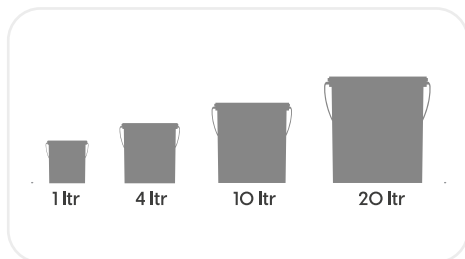


### SALIENT FEATURES

- In Wallmaax Sunlyte the acrylic emulsion is reinforced with hard polymeric additives that give a film that is twice as tough as regular emulsion paints for interiors, thus ensuring long durability. The tough film ensures lesser dust pick up.
- The Rich Matt variety ensures camouflaging of undulation in the surface. This gives a uniform feel to the finish on the ceiling.
- The Product is designed with balanced PVC to ensure optimal breathing properties.
- Fungus And Mildew Resistance Wallmaax Sunlyte Ceiling White Emulsion is designed to protect your walls against unwanted fungus that can cause considerable damage.
- 2X Film Strength: The film is twice as strong to a regular emulsion which ensures a durable finish. This makes the paint resistance to wear and tear increasing the life of the paint.

### PRODUCT FEATURES

#### Available Packs



#### Available Colors



#### Coverage

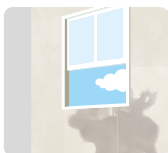
On normal masonry surface after brushing

**1 COAT**  
120 - 130 sq.ft./ltr\*\*

**2 COAT**  
60 - 70 sq.ft./ltr\*\*

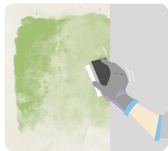
\* Actual coverage may vary from the quoted coverage due to factors such as method and condition of application and surface roughness and porosity.

### PRE PAINTING STEPS



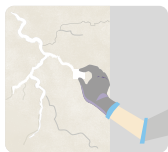
It is recommended to allow 28 days as the curing time for new masonry surfaces.

Cleaned Surface should be free from any loose paint, dust or grease. Growths of fungus, algae or moss should be removed by wire brushing and water.



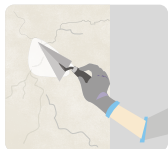
In case of areas having excessive dampness use appropriate rectification to overcome this substrate defect.

When the underlying surface exhibits chalkiness, in spite of thorough surface cleaning, use Wallmaax Salt Resistant Elastomeric Primer.



**FILLING FOR CRACKS:** For filling cracks upto 3mm use quality Crack Sealant.

**FILLING FOR HOLES & DENTS:** In case of dents and holes use Wallmaax Paints Acrylic Wall Putty or white cement and fine sand in the ratio 1:3



Wallmaax Sunlyte Ceiling White Emulsion should not be applied on surfaces / substrates that are subjected to continuous seepage or dampness.

### APPLICATION PARAMETERS

#### APPLICATION

STEP 1  
SANDING

STEP 2  
Cement Primer Interior  
Salt Resistant Elastomeric Primer  
BRUSH / ROLLER / SPRAY

STEP 3  
Deluxe Acrylic Wall Putty  
PUTTY KNIFE

STEP 4  
SANDING

STEP 5  
Cement Primer Interior  
Salt Resistant Elastomeric Primer  
Prime Seal  
BRUSH / ROLLER / SPRAY

STEP 6  
SANDING

STEP 7  
First Coat of Sunlyte - Ceiling White  
BRUSH / ROLLER / SPRAY

STEP 8  
First Coat of Sunlyte - Ceiling White  
BRUSH / ROLLER / SPRAY

THINNER	DILUTION %	APPLICATION VISCOSITY FLOW CUP - B4	RECOATING PERIOD
Sand the surface with #180 to get a smooth/uniform substrate			
WATER	80 - 100% 60 - 70%	Brush/Roller 30 - 40 Secs Spray 20- 25 Secs	4 - 6 HRS
AS REQUIRED	NA	Putty Knife	4 - 6 HRS
Sand the surface with #180 to get a smooth/uniform substrate			
WATER	Brush/Roller 80 - 100% Brush/Roller 60 - 70% Spray 70 - 90%	Brush/Roller 30 - 40 Secs Spray 20- 25 Secs	4 - 6 HRS
Sand the surface with #180 to get a smooth/uniform substrate			
WATER	Brush/Roller 40 - 50% Spray 60 - 70%	Brush/Roller 30 - 40 Spray 20 - 25	4 - 6 hrs
WATER	Brush/Roller 40 - 50% Spray 60 - 70%	Brush/Roller 30 - 40 Spray 20 - 25	4 - 6 hrs



## ADDITIONAL INFORMATION

### POST PAINTING CARE

For best performance ensure dry dust cleaning at regular intervals.

Allow drying time of 3 weeks for proper film formation before any sponge cleaning with mild soap solution.

### TECHNICAL DETAILS

**1. Drying time:** Surface dry time 30 min

**2. Sheen levels:** 2 - 5 at 60 deg GH

**3. Flash point IS101/1987 Part 1, Sec 6:** NA

**4. Stability of thinned paint:** To be used within 24 hours

**5. Shelf life:** 2 years from date of manufacture in original tightly closed containers away from direct sunlight and excessive heat.

### PRECAUTIONS

- » Do not apply when ambient temperature is less than 10°C or if the temperature might drop to this level within 4 hrs of application.
- » Do not over-thin or over-extend the brush.
- » Stir well and strain before use.
- » Tinted paints need thorough shaking immediately after tinter addition as well as before use

### SAFETY FEATURES

- » Kindly refer to the MSDS for Wallmaax Paints Sunlyte - Ceiling White Emulsion which gives detailed information on safety measures while handling the paint, which is available on request.
- » Store the container with the lid tightly closed in an upright position, in a cool, dry place
- » Keep out of reach of children and away from eatables.
- » May be harmful if swallowed. In case of ingestion seek immediate medical attention.
- » Wear eye protection during application. In case of contact with eyes, rinse immediately with plenty of water and seek medical advice.
- » In case of skin contact immediately wash skin with soap and plenty of water. Get medical attention if irritation develops or persists.
- » Do not breathe vapour or spray. It is recommended to wear suitable nose pad during sanding and surface preparation to avoid dust inhalation.
- » Do not pour leftover paint down the drain or in water courses.
- » In the event of spills, contain spillage using sand or earth.
- » No added Lead, Mercury or Chromium compounds.

for online shop  
search

[www.shop.wallmaaxpaints.com](http://www.shop.wallmaaxpaints.com)



or scan  
here

