



DAMP PROOF

DAMP PROOF LOADED EXTRA FIBER

Wallmaax Damp Proof is a fiber reinforced elastomeric liquid applied water proofing membrane. It is formulated with select elastomeric acrylic polymers and reinforcing polyester fibers. Upon curing, it forms a thick, seamless, durable membrane that offers ultimate water seepage resistance.



LEAD FREE* GUARANTEE

* All Wallmaax Paints products contain no added Lead, Mercury, Arsenic or Chromium from April 2016.



SALIENT FEATURES

Waterproofing

Waterproofing protection of up to 7 bars hydrostatic pressure. Water repellency properties augmented by usage of select Silicone modifications.

Crack-bridging

Unmatched crack bridging ability due to elastomeric properties.

Mechanical strength

Reinforced glass fibers for superior abrasion resistance.

Adhesion

Strong adhesion to masonry substrates augmented by Siloxane anchoring groups.

High sheen

High sheen, brilliant white color and thick coat results in high levels of heat reflectance.

Anti-carbonation

Reduces carbon dioxide and chloride ion diffusion thus protecting re-bars against corrosion.

Use & maintenance

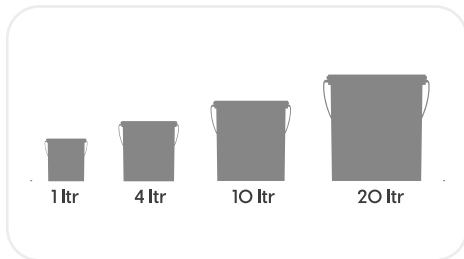
Single pack, easy to apply and simple re-coating.

Usage

designed for building roofs, terraces, parapet, sunshades and exterior vertical walls. It can also be applied on existing IPS, sound brick-bat coba or cementitious waterproofing.

PRODUCT FEATURES

Available Packs



Available Colors

White



*Currently available in more than 2000+ shades as per the Wallmaax Paints Colour Symphony.

Drying time to touch



4 - 6 Hours

Coverage

On RCC or plaster using brush or roller



Recommended System

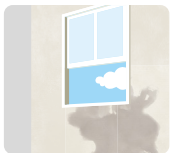
10 sq.ft./ltr on terraces

1 COAT

20 - 25 sq.ft./ltr on vertical walls

* Actual coverage may vary from the quoted coverage due to factors such as method and condition of application and surface roughness and porosity.

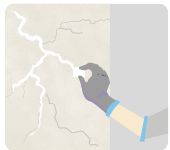
PRE PAINTING STEPS



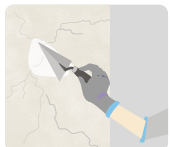
PLASTER New masonry surfaces must be allowed to cure completely. It is recommended to allow 28 days curing time for new masonry surfaces.



CLEANING Surface should be free from any loose paint, dust or grease. Remove all existing bitumen coatings completely. It is recommended to use intense wire brushing or high speed water jet for thorough cleaning.



REPAIRING The substrate must be checked for its soundness using small hammer. All cracks at corner joints, channels and parapets should be properly treated.



FILLING FOR CRACKS These need to be filled up or repaired based on the level of cracks and their depth.

APPLICATION PARAMETERS

APPLICATION

THINNER

DILUTION %

APPLICATION METHOD

RECOATING PERIOD

HORIZONTAL SURFACE

STEP 1
SELF PRIMING
DAMP PROOF

WATER

33%

BRUSH

4 - 6 HRS

STEP 2
FIRST COAT WATERPROOFING
DAMP PROOF

N/A

N/A

BRUSH / ROLLER

4 - 6 HRS

STEP 3
SECOND COAT WATERPROOFING
DAMP PROOF

N/A

N/A

BRUSH / ROLLER

4 - 6 HRS

VERTICAL SURFACE

STEP 1
SELF PRIMING
DAMP PROOF

WATER

33%

BRUSH

4 - 6 HRS

STEP 2
FIRST COAT WATERPROOFING
DAMP PROOF

N/A

N/A

BRUSH / ROLLER

4 - 6 HRS

STEP 3
FIRST COAT WALLMAAX
WEATHER GUARD / OPTIMAX

WATER

40%

BRUSH / ROLLER

4 - 6 HRS

STEP 4
SECOND COAT WALLMAAX
WEATHER GUARD / OPTIMAX

WATER

40%

BRUSH / ROLLER

4 - 6 HRS

1. As measured through a Ford cup. 2. Apply an additional coat of Damp Proof in case of severe dampness. 3. For best results, strictly follow the dilution and forced coverage requirements.



ADDITIONAL INFORMATION

POST PAINTING CARE

For the best performance of the paint, ensure proper washing and cleaning of all algal and fungal growth, if any, at regular intervals of six months.

TECHNICAL DETAILS

- 1. Form :** Ready to use viscous liquid
- 2. Mix Density :** 1.15 ± 0.02
- 3. Application temperature:** 15°C to 35°C

PRECAUTIONS

- » Do not apply during rains or extreme temperatures.
- » Avoid abuses which may lead to puncturing of membrane.
- » Ensure that the product is applied at least 6 inches inside the drain pipe.
- » For best results, apply parapet to parapet to envelope the entire building.

SAFETY FEATURES

- » Kindly refer to the MSDS for Wallmaax Damp Proof which gives detailed information on safety measures while handling the paint, which is available on request.
- » Store the container with the lid tightly closed in an upright position, in a cool, dry place
- » Keep out of reach of children and away from eatables.
- » May be harmful if swallowed. In case of ingestion seek immediate medical attention.
- » Wear eye protection during application. In case of contact with eyes, rinse immediately with plenty of water and seek medical advice.
- » In case of skin contact immediately wash skin with soap and plenty of water. Get medical attention if irritation develops or persists.
- » Do not breathe vapour or spray. It is recommended to wear suitable nose pad during sanding and surface preparation to avoid dust inhalation
- » Do not pour leftover paint down the drain or in water courses. In the event of spills, contain spillage using sand or earth
- » No added Lead, Mercury or Chromium compounds.

for online shop
search

www.shop.wallmaaxpaints.com



or scan
here

